



GMT MONTHLY MEMBERSHIP PROGRESS REPORT

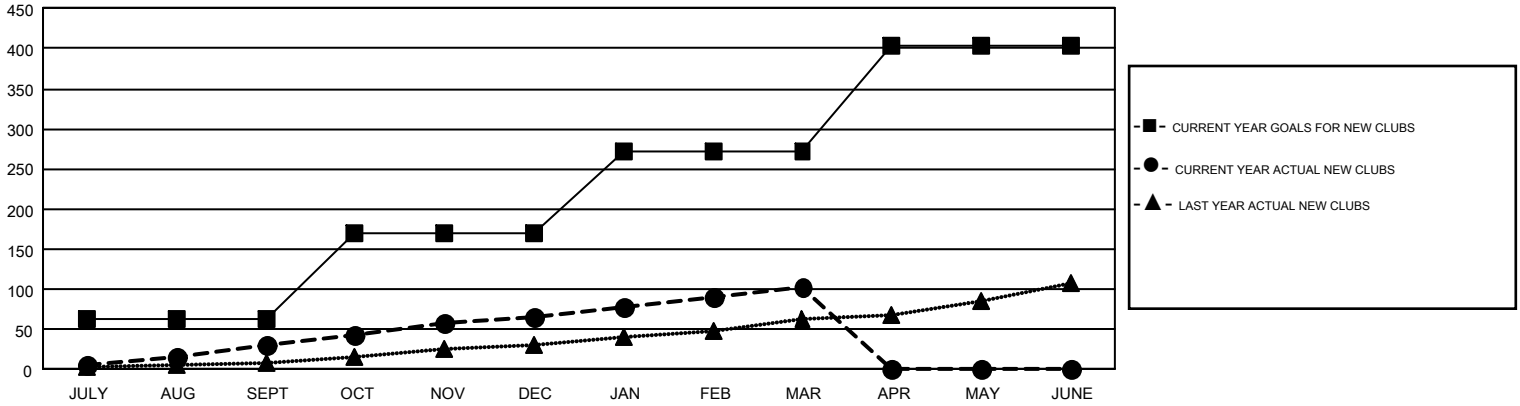
Results as of: 3/31/2017

GMT Constitutional Area 1

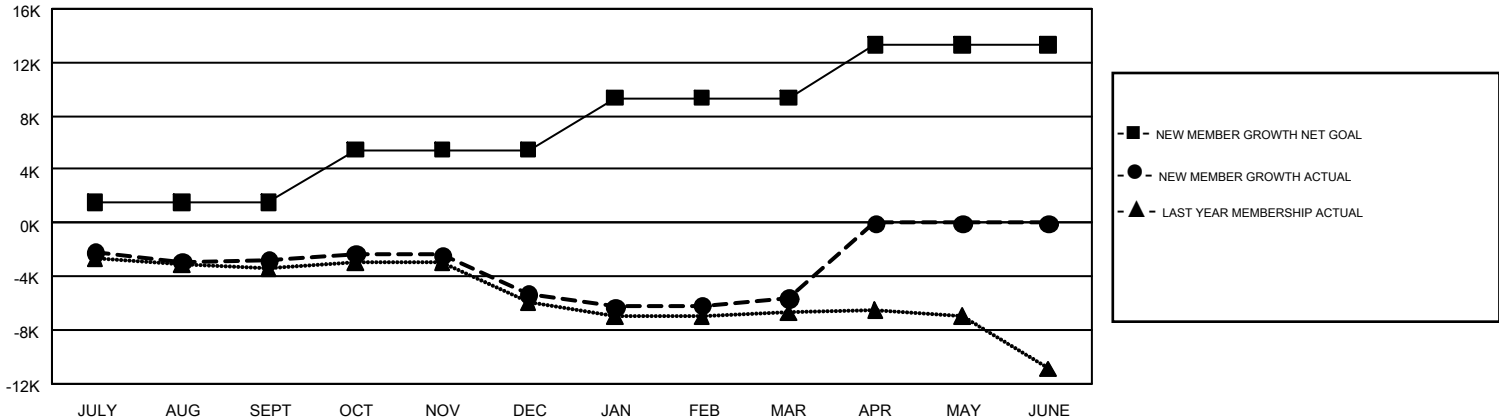
REPORT DOES NOT INCLUDE CLUBS IN UNDISTRICTED AREAS.

Clubs				Members			
RESULTS FOR 2016-2017				RESULTS FOR 2016-2017			
QUARTER	NEW CLUB GOAL	NEW CLUBS	DROPPED CLUBS	QUARTER	NEW MEMBER GROWTH NET GOAL (not reinstated or transfers)	NEW MEMBER GROWTH ACTUAL (not reinstated or transfers)	DROPPED MEMBERS ACTUAL (including transfers)
JULY/AUG/SEPT	62	32	56	JULY/AUG/SEPT	1,551	8,002	10,815
OCT/NOV/DEC	107	34	86	OCT/NOV/DEC	3,905	7,623	10,151
JAN/FEB/MAR	102	37	37	JAN/FEB/MAR	3,899	8,510	8,805
APR/MAY/JUNE	133	0	0	APR/MAY/JUNE	3,952	0	0

GOALS AND ACTUAL NEW CLUBS CUMULATIVE



GOALS AND ACTUAL MEMBERS CUMULATIVE



DROPPED CLUBS: 179	6,599 CLUBS OF 11,592 ADDED 1 OR MORE NEW MEMBERS	GENDER DISTRIBUTION MALE 218,835 (69.44%) FEMALE 96,302 (30.56%)
DROPPED MEMBERS DECEASED 3,699 CLUB CANCELLED 1,255 OTHER 24,815 <hr/> TOTAL 29,769	CLICK HERE FOR CUMULATIVE MEMBERSHIP DATA	TOTAL FAMILY UNIT MEMBERS 57,723 FAMILY MEMBERS PAYING HALF DUES 29,605